



# Our Lady of the Rosary School

Wainui Road, Waiwhetu, Lower Hutt, 5010

Phone: (04) 566 3258

Fax: (04) 566 3159

Email: [admin@olr.school.nz](mailto:admin@olr.school.nz)

Web: [www.olr.school.nz](http://www.olr.school.nz)

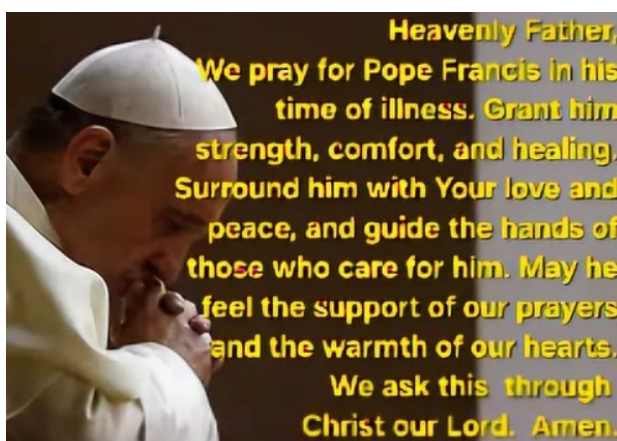
## Newsletter - Week 6, Term 1, 12<sup>th</sup> March 2025

OUR SCHOOL VIRTUES: Whakapono - Faith, Tūmanako - Hope, Aroha - Love, Manaakitanga - Charity

Kia ora koutou, Fakafeiloaki, Ni Sa Bula, Kia Orana, Welcome, Talofa lava, Malo e lelei, Nǐ hǎo, Namaskaram, Huānyíng, Kumusta,

During our time of Lent may we give of our time to support and help others in need.

As you will be aware Pope Francis is unwell, please keep him in your prayers. The Jubilee prayer from Pope Francis is within this newsletter.



Nau mai, Haere mai



Yushane

### MUSIC

It is wonderful to have Lucy Ryan back for our music programme throughout 2025. Lucy shares her talents with us and brings music alive throughout our kura. Thank you Lucy! We are also very fortunate to have Helen support Lucy with our choir on Thursday afternoons. Thank you.

### Keeping our tamariki SAFE

Please keep our tamariki safe by using the **school crossing** and by NOT parking OR walking through the staff carpark. Thank you to adult helpers who supervise the crossing daily. We really appreciate the time you give to help our tamariki.

### School Swimming Programme for Middle and Senior Syndicates (Rooms 1, 14, 15, 2, 3 and 4) begins next week on Monday 17th March at Te Ngaengae Pool, Naenae.

Students will go to and from the pool by bus.

Monday 17th to Thursday 20th and Monday 24th to Thursday 27th March between 10am and 2pm.

Students can **wear their PE uniform with their sports shoes or school sandals or shoes** for the days they are swimming. This will make changing easier. Please ensure ALL your child's clothing is NAMED.

### TIMETABLE

Group 1 (**Rm 14**), leave OLRS at 9.30am. Swim session at 10.00am - 10.30am  
Group 2 (**Rm 15**), leave OLRS at 10.10am. Swim session at 10.30am - 11.00am  
Group 3 (**Rm 1**), leave OLRS at 10.40am. Swim session at 11.00am - 11.30am  
Group 4 (**Rm 2**), leave OLRS at 12.10pm. Swim session at 12.30pm - 1.00pm  
Group 5 (**Rm 4**), leave OLRS at 12.40pm. Swim session at 1.00pm - 1.30pm  
Group 6 (**Rm 3**), leave OLRS at 1.10pm. Swim session at 1.30pm - 2.00pm



# LANGUAGE EVENING



TUE 18TH MAR

On Tuesday the 18th of March at 6pm Mr. Jose Miguel Alcocer Hernandez, a parent from OLRS, will be hosting an evening for parents who speak and read in a language other than English. This event will provide guidance on using technology to access information written in English.



TUE 18TH MAR

We invite you to join us if your first language is:

- Malayalam
- Mandarin
- Tamil
- Tokelauan
- Tagalog
- Samoan
- Shona
- Vietnamese
- Hindu
- Spanish
- Indonesian
- Tegugus
- Chin Haka
- Farsi
- Punjabi
- Cantonese

Or any other language that isn't English.

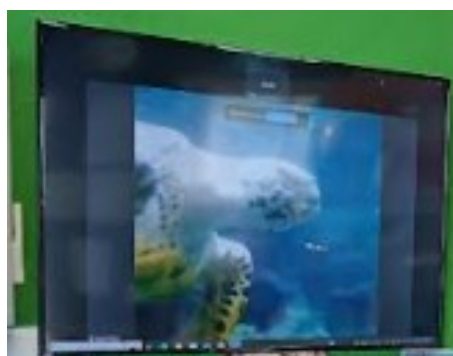
## Have you moved house, changed cell-phone number or email address?

Please let the office know of any new details.

Email: [admin@olr.school.nz](mailto:admin@olr.school.nz)  
or phone 045663258

### The Hutt Fest information evening on 25th March

at 6pm is for whānau of year 5-8 ākonga who have received an invitation to the evening from your child.



The Middle Syndicate had a **Virtual Aquarium Visit** on Friday. They enjoyed learning about the turtles, penguins, starfish and seahorse.



**Spirited Youth Jam** is on this Sunday, 16th March at 11:30 at Our Lady of the Rosary Church. For Intermediate aged youth and older. No experience necessary! Bring your voice or an instrument and some money toward our pizza lunch. Contact Lucy Ryan 0226539525 for more info.

## Up Coming Events

- 14 Mar Rūma 2 & 12 Mass at OLR Church, 9.30am
- 14 Mar Irish Dance Show for Junior syndicate, 11am
- 17 Mar St Patrick's Day
- 18 Mar English as a Second Language evening, 6pm
- 17-27 Mar Swimming programme @ Te Ngaengae Pool for Middle & Senior Syndicates (not Friday's)
- 25 Mar Hutt Fest Information evening, 6pm in the hall
- 28 Mar Rūma 1 & 8 Mass at OLR Church, 9.30am
- 1 Apr Issue 1 Book club orders close
- 1 Apr OLR Board hui, 6.30pm
- 2 Apr Immunisations, Year 7 tamariki
- 4 Apr Rūma 3 & 10 Mass at OLR Church, 9.30am
- 6 Apr Daylight Savings ends, clocks back
- 11 Apr Easter Liturgy
- 11 Apr End of Term 1
- 28 Apr Term 2 begins, Powhiri at 9am
- 1 May Sacramental Programme - Reconciliation Parent session, 5.30pm at OLRs in the Library
- 3 May Year 7/8 Netball begins
- 5 May Year 5/6 Netball begins
- 6 May School Cross Country at Te Whiti Park, pp 8/5
- 11 May Mother's Day
- 12 May Road Safety Week
- 16 May Lit Quiz
- 20 May OLR Board Hui, 6.30pm
- 21 May Sacramental Programme - Sacramental of Reconciliation, 6pm @ OLRs Church
- 27 May South East Zone Cross Country
- 29 May Ascension of Jesus Christ
- 2 Jun King's Birthday (school closed)
- 3 Jun Staff Curriculum Day (school closed)

Our school website: [www.olr.school.nz](http://www.olr.school.nz)

[SPORTS DRAWS](#)

[Te Wairua Tapu Holy Spirit Newsletter](#)

**Our Term 1 School Mass date and time is to be confirmed.**

Our Thursday music programme with Lucy began last week. 93 enthusiastic ukulele players!





# OLRS Emergency Information

## Contact Details:

It is extremely important that we have correct and up-to-date contact details and information for your tamariki. **Please notify the school office when you have changes of address, phone numbers, email address, workplace etc. and also any changes to your child's other emergency contacts when required.**

When considering who to put as a contact for your child at kura, please ensure that you have at least ONE contact that lives **close by to the school** who can collect your child in any emergency/natural disaster, in the case of you not being able to get to your child for some time, eg. you work in Wellington, you travel out of town regularly, you would not be able to leave your work place immediately etc.

## Emergency food and emergency procedures:

As listed on the stationery list, please provide a **NAMED box of muesli bars** for each of your tamariki. The bars will be stored in the classroom. Bars will be shared amongst the class **UNLESS** your child requires a particular muesli bar type **due to allergies**, please indicate this on the box. The kura will also purchase top-up emergency food for our tamariki.

## Medication:

If your child takes regular or daily medication at kura, we will make every effort to take this with us in the event of an evacuation.

**Emergency Procedures:** See our Emergency Procedures on the next page.

**Reunification of families** in the case of an emergency:

**When there is an emergency we will attempt to notify parents by:** Updating our Facebook status, sending a text message, sending an email and/or posting a message on the homepage of our website.

**When parents/authorised alternates arrive to collect their child/ren:** Parents or their authorised alternates are directed to go to the child's classroom, or the Intermediate Hub. Their name is checked against the list of authorised people on the student's emergency contacts list. The student is marked as leaving, with the name of the person collecting and time of collection.

## Off-site evacuation point is:

If we need to leave the school property our evacuation site is **Te Whiti Park**, Whites Lines East, Lower Hutt (in the carpark by the play area). If required, we will continue up to the very top of Whites Line East Road. We will walk out the front gate (Wainui Road) and down to the corner shops, turn right towards the hills, to continue up Whites Line East to Te Whiti Park car park (immediately next to the playground). We will communicate electronically as best we can. An off-site evacuation would most likely occur in the event of a tsunami warning, flooding or large fire.



**Get prepared at home – Having a Plan:** You can view information online at <https://getready.govt.nz/prepared/household/> about 'Having a Plan' from Wellington Region Emergency Management.

For your information, below is our kura emergency procedure:

## OLRS EMERGENCY PROCEDURES

### **FIRE**

1. A fire is signalled by a loud siren and a recorded voice advising to evacuate the building.
2. If a fire is detected before alarms sound, activate the nearest red fire alarm box.
3. Each class should leave by the nearest emergency door.
4. If the nearest emergency door is close to the fire, then leave by the other door.
5. Tamariki should process in single file, to assemble in the middle of the field.
6. Care should be taken on the way to the assembly point to keep the tamariki well away from the source of the fire.
7. Teachers to count tamariki then call the roll. Teachers to raise their hand to indicate that all tamariki are accounted for in their class. If child/ren **not** accounted for, advise designated staff member immediately.
8. Teachers are to remain with the tamariki at all times, unless authorised by senior staff to take on some other role.

#### **Evacuation Responsibilities:**

1. Each teacher's first responsibility at all times is to tamariki in class. Take evacuation list if possible.
2. Principal - Meet office person to find out which area the activated alarm is, go directly to activation.
3. Office person:  
Take attendance printout for the day, visitors book, emergency folder, keys and phone.  
Check fire board - front of hall, for location of activated alarm.  
Meet Principal to say where activated alarm is.  
Go to the field and remain there with paperwork.
4. Once classes have assembled on the field, **check all tamariki and personnel are accounted for, IF NOT, designated staff members to start checks or OTHER STAFF as required.**  
Staff member 1 - check rooms 3, 4, 5, 6, 7 and intermediate syndicate toilets.  
Staff member 2 - check rooms 8, 9, 10, 11, 12 and junior syndicate toilets.  
Staff member 3 - check the hall, rooms 14, 15, 1, 2 and middle syndicate toilets.  
Staff member 4 - check admin block/medical room, Library and Rm 13.

### **EARTHQUAKE / TSUNAMI**

1. In the event of an Earthquake, **DROP, COVER, HOLD.**
2. If INSIDE, stay inside, if OUTSIDE, stay outside.
3. After a STRONG quake – once shaking has stopped and it has been deemed safe by a risk assessment, classes to go outside and meet in the middle of field, OR where Principal/DP's/Teachers identify as a safe area. Roll call for tamariki and staff to be undertaken.
4. If evacuation is necessary due to Tsunami, take your class emergency pack, civil emergency forms and assemble on the field. Evacuate out the front gate (Wainui Road gate) and walk quickly down to the corner shops to continue down Whites Line East to Te Whiti Park car park, on Whites Line East – immediately next to the playground). If required, we will continue to the top of Whites Line East (see red separated lines on map).  
**If no time to assemble, account for your class and evacuate immediately.**

### **LOCK DOWN**

1. The break bell will sound continuously for approx. one minute.
2. If outside, go inside to your classroom, teacher to lock doors, close windows/blinds, move away from windows, teacher/staff to have their phone on them if possible and place on 'silent mode'.
3. Wait for the 'all clear' from senior management.

## *An update from our School Board*

Kia ora e te whānau,

This will be a busy year for the school board, we will be developing a new strategic plan for the school this year and we have school board elections coming up in September.

Two years ago these are the goals we set after consulting with our community including staff, students and whānau:

- For all our ākonga to develop a relationship with Christ through a deeper understanding of our faith and virtues in their daily life.
- Nurture high expectations for ākonga to become confident engaged learners.
- For all our ākonga to live to their full potential accepted for who they are and safe to become who they will.

Strategic planning is the process of envisioning a desired vision for the future and then translating this vision into defined goals. Each year the school produces an action implementation plan for how we will bring this to life. It is available on the website.

We will be checking in with all of you this year to ensure our strategic goals for the next three years match up with what our communities want.

Strategic planning is one of the activities of the board, we also monitor student achievement, our catholic character, property and finance. To be on the board you don't need experience in this area, there is plenty of training available. I have loved being on the board and I encourage you to think about standing and discovering a bit more about how the school operates behind the scenes. There is more information available [here](#) and I encourage you to find out more, or to think about coming to a meeting to see what it is about. We have meetings twice a term, with our next meeting on April 1st.

At the end of the term we will be having some drainage work done at the back gate. After this is complete we are going to begin looking at junior playground options. We will need to look at fundraising for this project and will look to start a parents fundraising group to help us to do this. We will share more information with you all as we get further along. We have been talking about this for a long time so it is exciting to begin to get this project off the ground. A very long time in coming, much of it due to having to sort out the flooding that happens at the back of the school before we could proceed.

We will be in touch and keep you updated with progress.

Ngā mihi mahana

Natasha Watson

Our Lady of the Rosary School Board, Presiding Member



Tamariki from the Junior and Middle syndicates who received Golden Tickets for showing the kura Virtues of Tūmanako, Whakapono, Aroha and Manaakitanga.

***Congratulations***



### Te Karakia Tiupirī

E te Matua i te rangi,  
whakaarahia anōtia i roto i a mātou te  
tūmanako tapu mō te taenga mai o tō  
Kīngitanga, mā roto mai i te whakapono  
ki tāu Tamaiti a Hēhu Karaiti, tō mātou kiritahi,  
tērā whakapono nāu anō i homai, anō me te  
kāpura o te aroha e whitangia nei i ō mātou  
ngākau e te Wairua Tapu.

Ko tō keratia hei mea hangahou i a mātou hei  
kaiwhakatō i ngā kākano o te Rongopai.

Ko ērā kākano anō ka tupu ki roto tahi  
i te hunga tangata me te taiao hei hangahou  
i te rangi me te whenua i runga  
i te tūmanako kia kauparehia te Īweri,  
ko tō korōria tērā ka tiaho mai  
mō āke tonu atu.

Kia oho anō te keratia o te Tiuparī  
ki roto i a mātou, arā ngā *Manene* o te  
*Tūmanako* e manako nei ki ngā  
Homaitanga o te rangi.

Ko tērā keratia anō kia hora anō i te koa me te  
mārie o tō mātou Kaiwhakaea ki runga  
i te mata o te whenua.

Māu e te Atua, te korōria me ngā kupu  
whakapai katoa mō āke tonu atu.

Āmene.

### Jubilee Prayer

Father in heaven,  
may the *faith* you have given us  
in your son, Jesus Christ, our brother,  
and the flame of *love* enkindled in  
our hearts by the Holy Spirit,  
reawaken in us the  
blessed *hope* for the  
coming of your Kingdom.

May your grace transform us  
into tireless cultivators of the  
seeds of the Gospel.

May those seeds transform from  
within both humanity and the whole cosmos  
in the sure expectation of  
a new heaven and a new earth, when,  
with the powers of evil vanquished,  
your glory will shine eternally.

May the grace of the Jubilee reawaken in us,  
*Pilgrims of Hope*,  
a yearning for the treasures of heaven.

May that same grace spread  
the joy and peace of our  
Redeemer throughout the earth.

To you our God, eternally blessed,  
be glory and praise for ever.

Amen

*Franciscus*



CAMP 2026

# ICE-CREAM FRIDAY



WHERE?  
OUTSIDE RMS 3 AND 4

WHEN?  
EVERY FRIDAY AFTER  
SCHOOL

WHAT?  
ICE-CREAMS &  
ICE-BLOCKS

**\$1 EACH**

